



2025 annual report to the Community

Victor Harbor Primary School

Victor Harbor Primary School number: 0453

Partnership: Fleurieu



School principal:

Jessica Morris

Date of endorsement:

30/01/2026



Government
of South Australia
Department for Education

Context Statement

Victor Harbor Primary School caters for students from R-6. At the time of this report, the enrolment in 2025 is 454. Victor Harbor Primary School is classified as Category 4 on the Department for Education Index of Educational Disadvantage. At the time of this report, the school population includes 11% Aboriginal students, 22% students with disabilities, 1% students with English as an additional language or dialect (EALD) funded background, 2% children/young people in care. Further information about the school is available on the school's website (including its context statement), as well as the My School website.

Data Source: Department for Education data holdings from Mid census captured in AUGUST 2025.

Governing Council Report

Like any year, the activities of 2025 have seen some notable achievements as Victor Harbor Primary School continues to move forward and develop as a place of education. As the details in the rest of this report show, we are a school which has a remarkable diversity and complexity in our students.

The introduction of the Special Options Class for junior primary and the extension of this for 2026 through to year 6 is a major milestone for the school. Being able to provide an educational option in our community for many families who did not have this previously, is a testament to the work of the school leadership. While this has created some logistical challenges and difficulties in the school environment, overall, our community is richer for it.

In 2025 via the school leadership the school's strategic plan has been updated. This has included input from parents, community, staff and students, resulting in a plan to take us forward and continue the growth in education which is provided by our school. This was not a small task and everyone involved needs to be congratulated on their efforts.

In conjunction with the YMCA, Governing Council continues to provide OSHC services. This contract has been extended for a further 3 years and we thank the staff in the service for everything they do. The list of enrichment and social activities provides, especially in vacation time has something for every child. Likewise Governing Council has managed the provision of the school canteen, which continues to provide lunch options for students that are good value and nutritious. At a time when many schools struggle to provide a canteen we are delighted to be able to do this and thank the staff and volunteers who work in the canteen.

As a governing council, our members have undertaken a range of activities within the school in both their official capacity and as volunteers. The school disco was definitely a highlight in my house. Thank you to the members of the governing council for everything you do in your roles, not only helping around the school but representing parents and the community in providing feedback and guidance to the school leadership.

As part of the normal activities of the governing council, we have had presentations from different aspects of the school. These updates on everything from leaders within the school, whether they be staff or the school captains are always welcomed and provide confidence the school is working hard at providing our children the best education they can. The efforts of all staff are appreciated and we thank them for what they do for our kids. To the volunteers as well, who help in our canteen, library, reading with children and many other efforts thank you for everything you do.

I would like to acknowledge Jess Morris and Emma Foot and their senior leadership. Your efforts in leading our school while not always recognised is invaluable and long lasting. While 2026 brings changes, what you have achieved this year and in 2024 will still have a positive impact on the school for quite some time. Not only the special options class and strategic plan but the little things to leave the school in an improved position from when you took over, without losing sight of the values and history which drive the school means your contribution once again, has been very positive.

Finally, to the members of the governing council, thank you for your generosity of time and effort. It is not always easy to find the time, but we could not have a more enthusiastic and generous group of people. It is always a pleasure to be with you and listen to and see the contributions you make to our school.

Russell Trainor

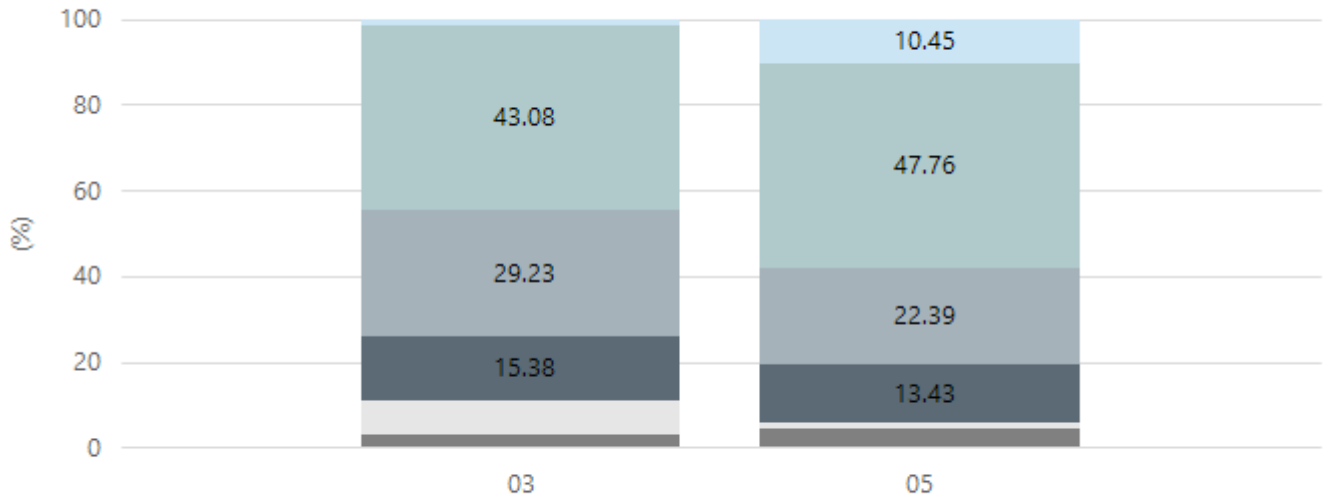
Victor Harbor Primary School
Governing Council Chairperson

Performance Summary

NAPLAN Proficiency

In 2023 the Australian Curriculum, Assessment and Reporting Authority (ACARA) - a Commonwealth Independent statutory authority - announced changes to NAPLAN performance reporting. The new approach replaces the previous numerical NAPLAN bands and the national minimum standard.

Numeracy

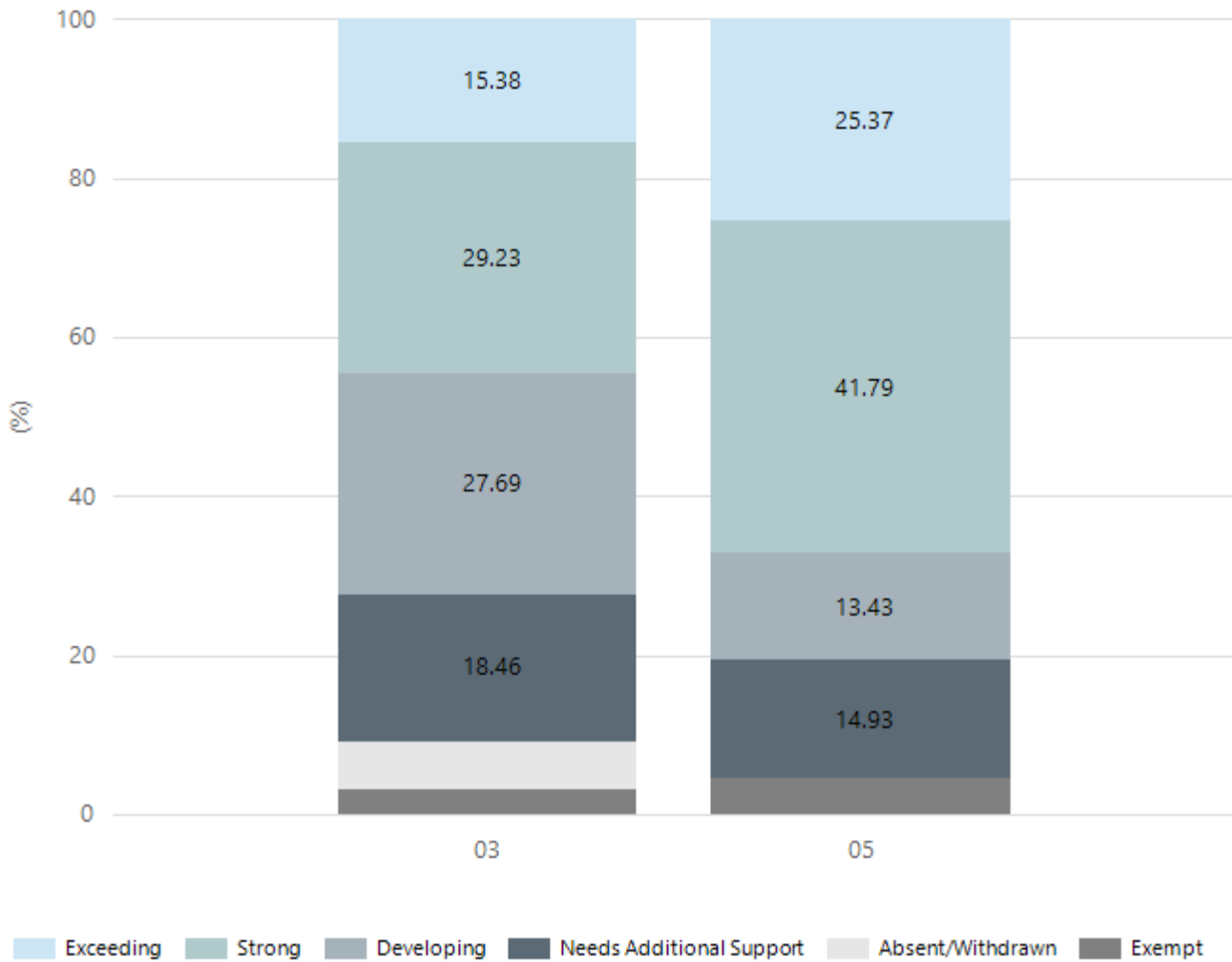


Exceeding Strong Developing Needs Additional Support Absent/Withdrawn Exempt

Year Level	03	05
Exceeding	1	7
Strong	28	32
Developing	19	15
Needs Additional Support	10	9
Absent/Withdrawn	5	1
Exempt	2	3
Total	65	67

Data Source: Department for Education Assessment Data Holdings, 2025. If there are less than 6 students who sat NAPLAN in a school, no information will be shown. If a year level has less than 6 students, that year level will not be shown in NAPLAN results.

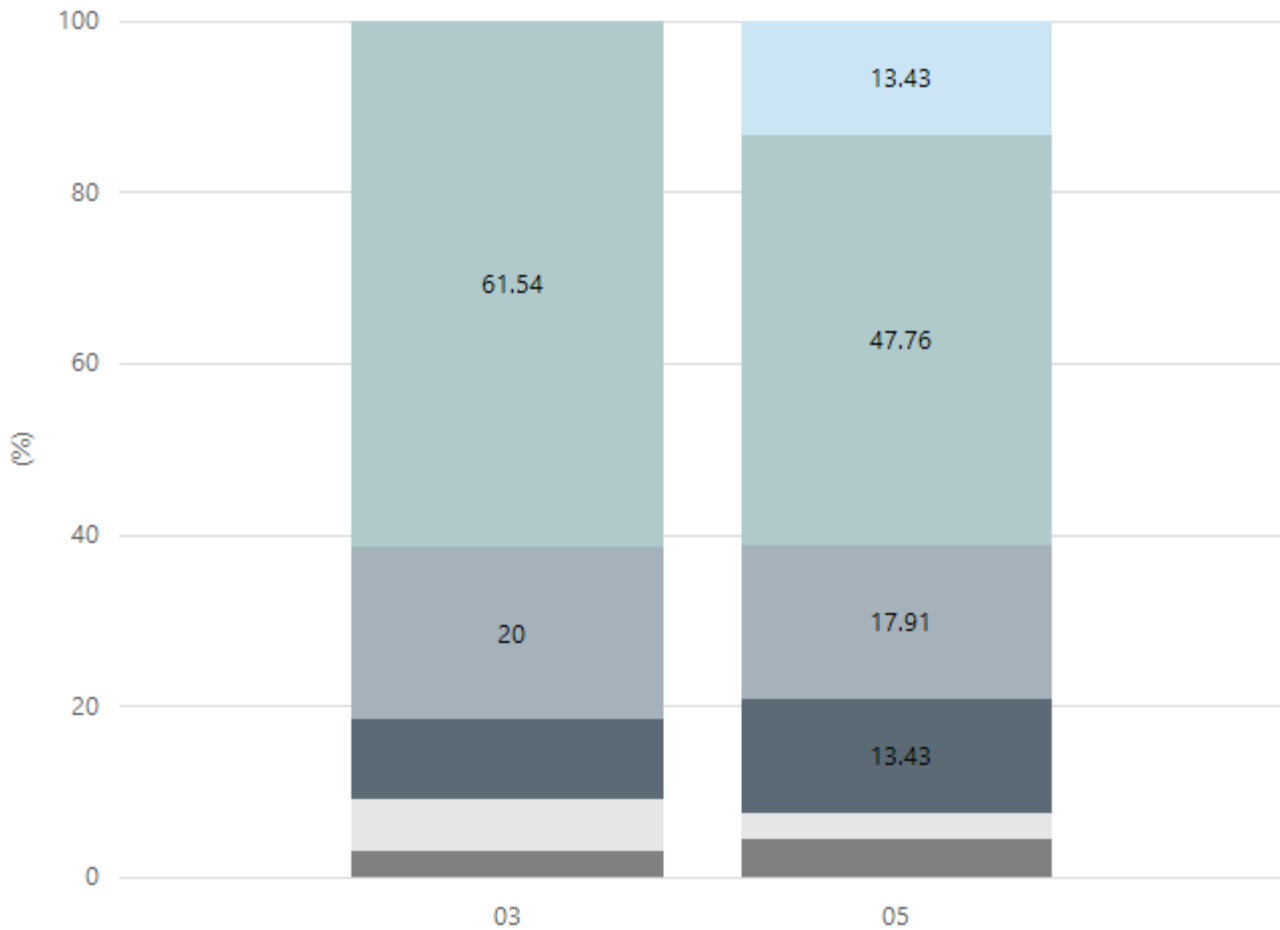
Reading



Year Level	03	05
Exceeding	10	17
Strong	19	28
Developing	18	9
Needs Additional Support	12	10
Absent/Withdrawn	4	
Exempt	2	3
Total	65	67

Data Source: Department for Education Assessment Data Holdings, 2025. If there are less than 6 students who sat NAPLAN in a school, no information will be shown. If a year level has less than 6 students, that year level will not be shown in NAPLAN results.

Writing

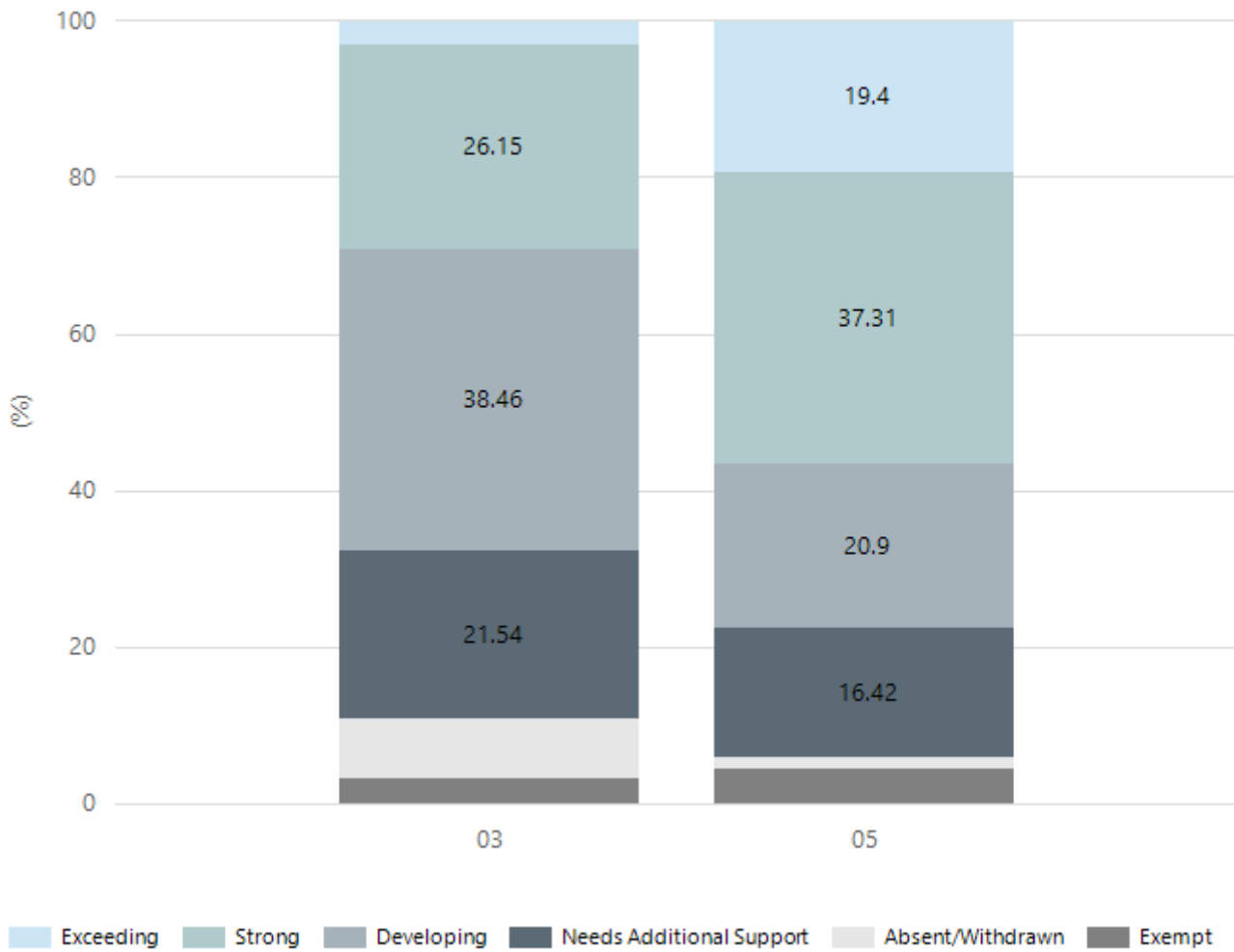


Exceeding Strong Developing Needs Additional Support Absent/Withdrawn Exempt

Year Level	03	05
Exceeding		9
Strong	40	32
Developing	13	12
Needs Additional Support	6	9
Absent/Withdrawn	4	2
Exempt	2	3
Total	65	67

Data Source: Department for Education Assessment Data Holdings, 2025. If there are less than 6 students who sat NAPLAN in a school, no information will be shown. If a year level has less than 6 students, that year level will not be shown in NAPLAN results.

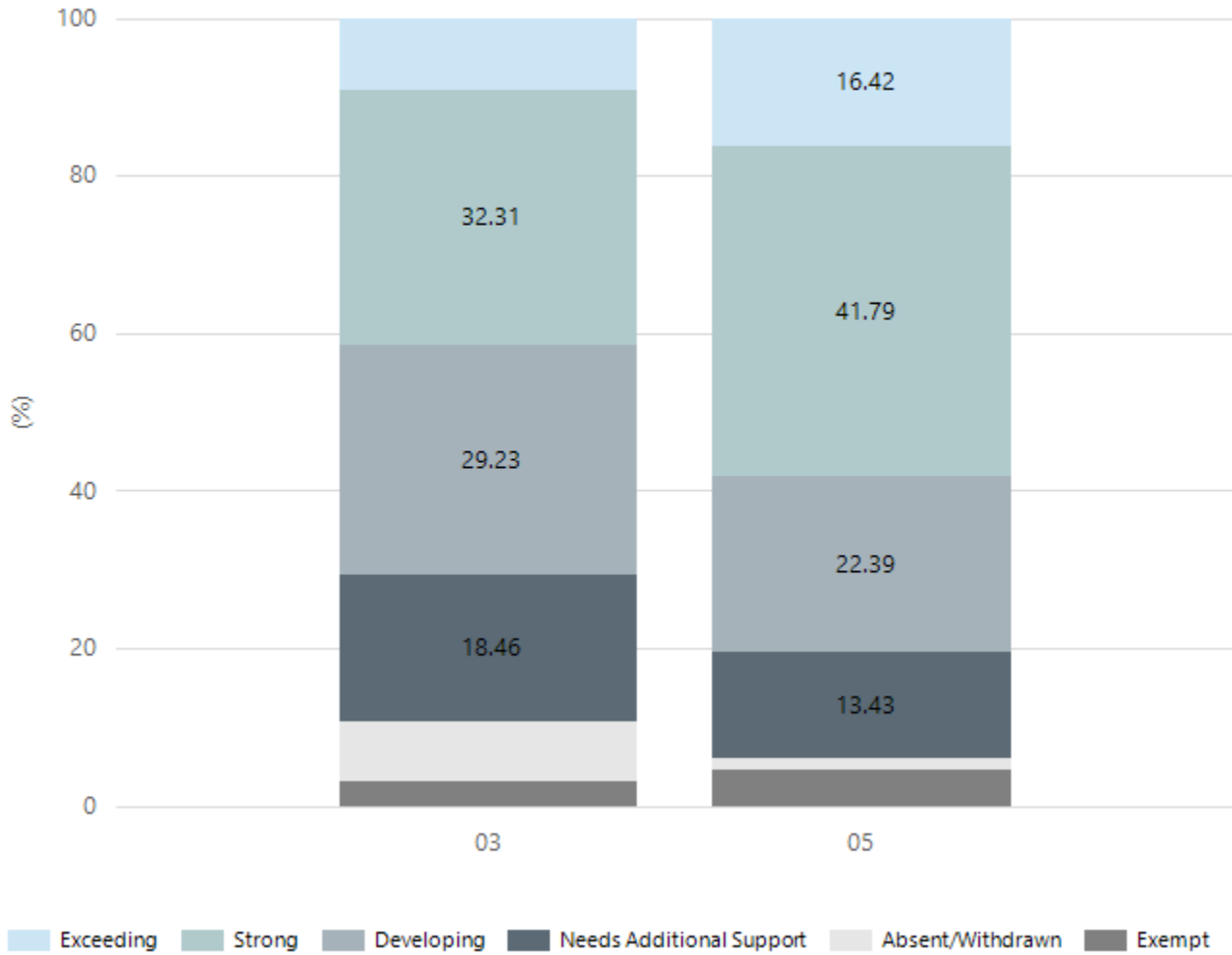
Grammar



Year Level	03	05
Exceeding	2	13
Strong	17	25
Developing	25	14
Needs Additional Support	14	11
Absent/Withdrawn	5	1
Exempt	2	3
Total	65	67

Data Source: Department for Education Assessment Data Holdings, 2025. If there are less than 6 students who sat NAPLAN in a school, no information will be shown. If a year level has less than 6 students, that year level will not be shown in NAPLAN results.

Spelling

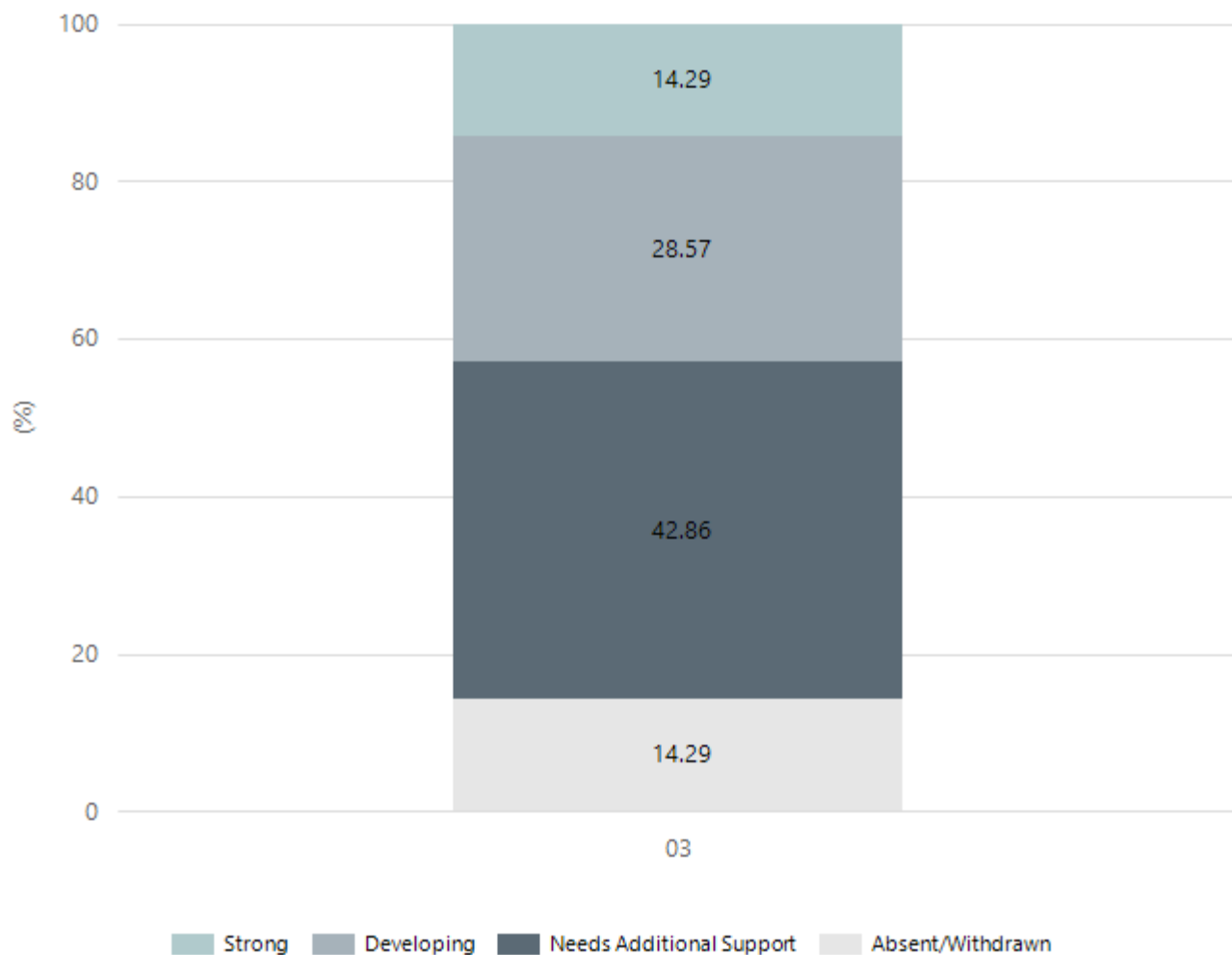


Year Level	03	05
Exceeding	6	11
Strong	21	28
Developing	19	15
Needs Additional Support	12	9
Absent/Withdrawn	5	1
Exempt	2	3
Total	65	67

Data Source: Department for Education Assessment Data Holdings, 2025. If there are less than 6 students who sat NAPLAN in a school, no information will be shown. If a year level has less than 6 students, that year level will not be shown in NAPLAN results.

NAPLAN Proficiency - Aboriginal Learners

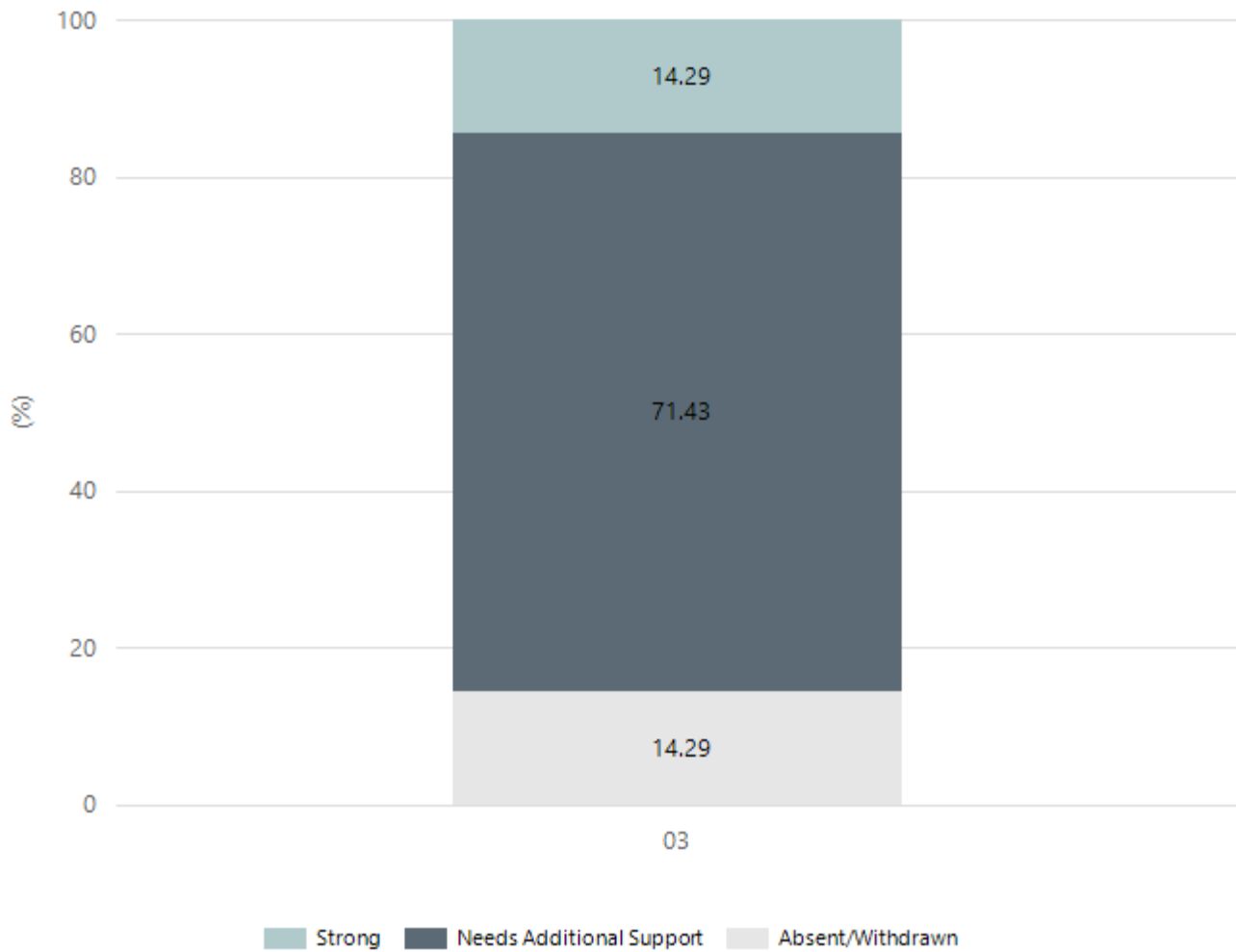
Numeracy



Year Level	03
Strong	1
Developing	2
Needs Additional Support	3
Absent/Withdrawn	1
Total	7

Data Source: Department for Education Assessment Data Holdings, 2025. If there are less than 6 students who sat NAPLAN in a school, no information will be shown. If a year level has less than 6 students, that year level will not be shown in NAPLAN results. Only data for Aboriginal learners is displayed.

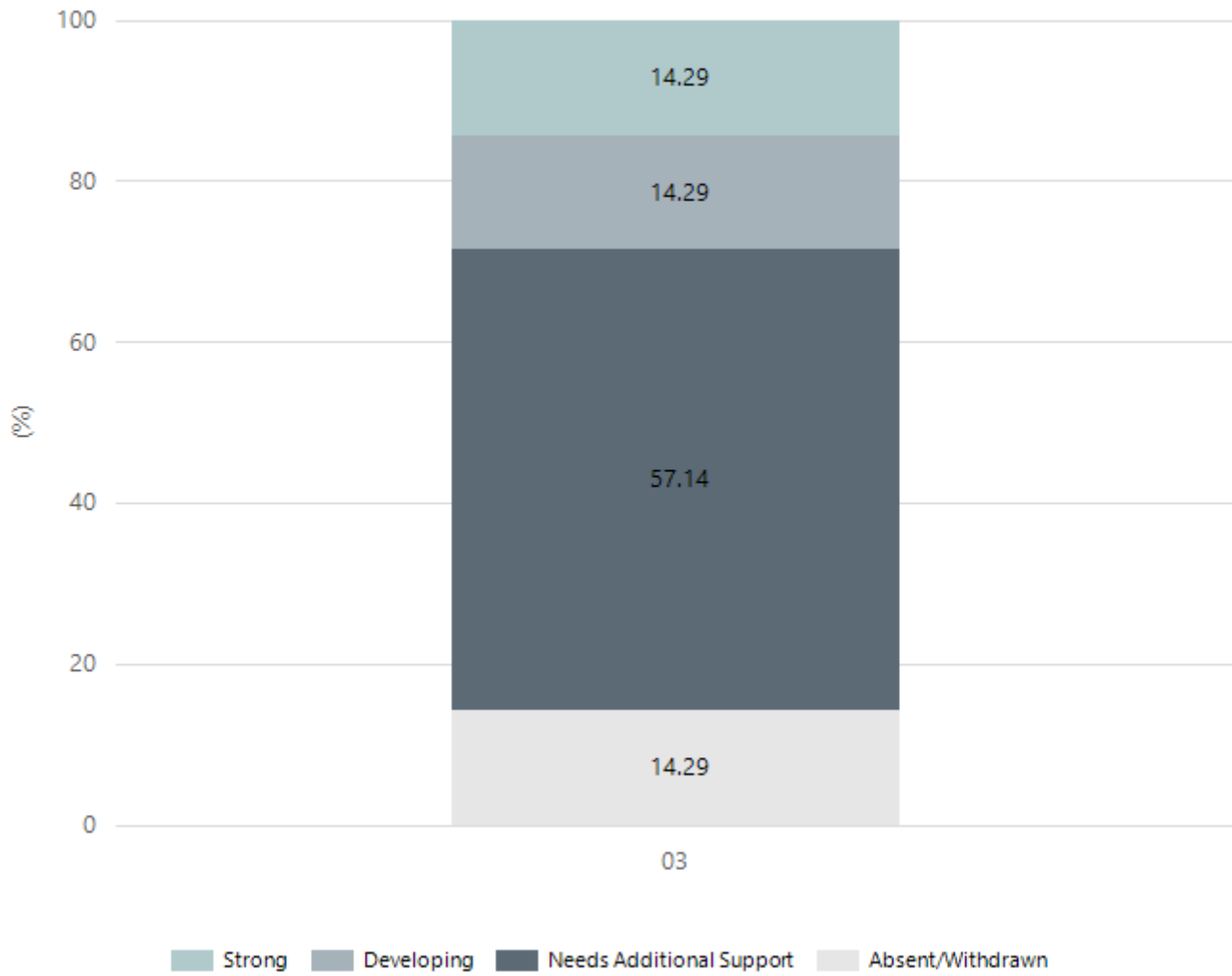
Reading



Year Level	03
Strong	1
Needs Additional Support	5
Absent/Withdrawn	1
Total	7

Data Source: Department for Education Assessment Data Holdings, 2025. If there are less than 6 students who sat NAPLAN in a school, no information will be shown. If a year level has less than 6 students, that year level will not be shown in NAPLAN results. Only data for Aboriginal learners is displayed.

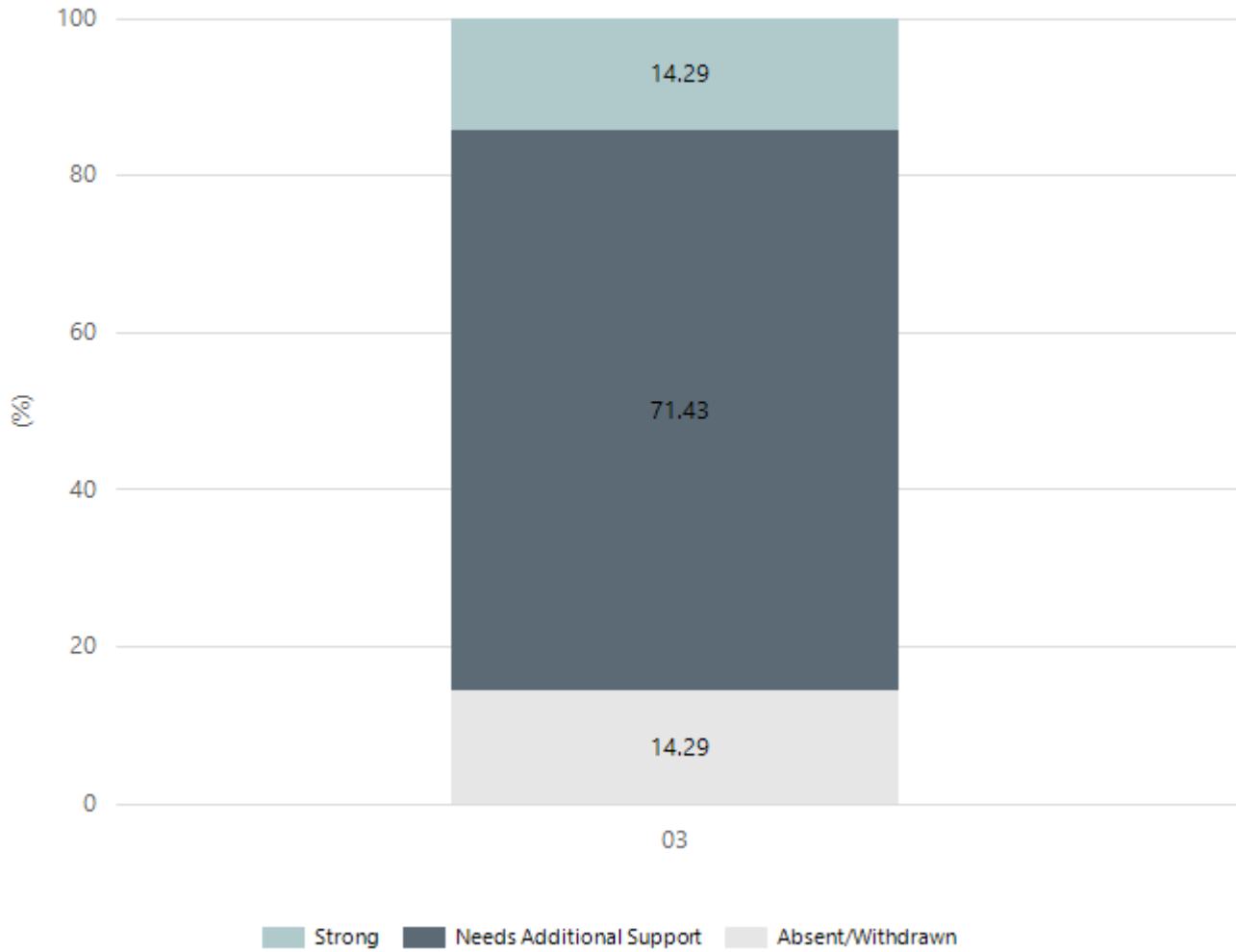
Writing



Year Level	03
Strong	1
Developing	1
Needs Additional Support	4
Absent/Withdrawn	1
Total	7

Data Source: Department for Education Assessment Data Holdings, 2025. If there are less than 6 students who sat NAPLAN in a school, no information will be shown. If a year level has less than 6 students, that year level will not be shown in NAPLAN results. Only data for Aboriginal learners is displayed.

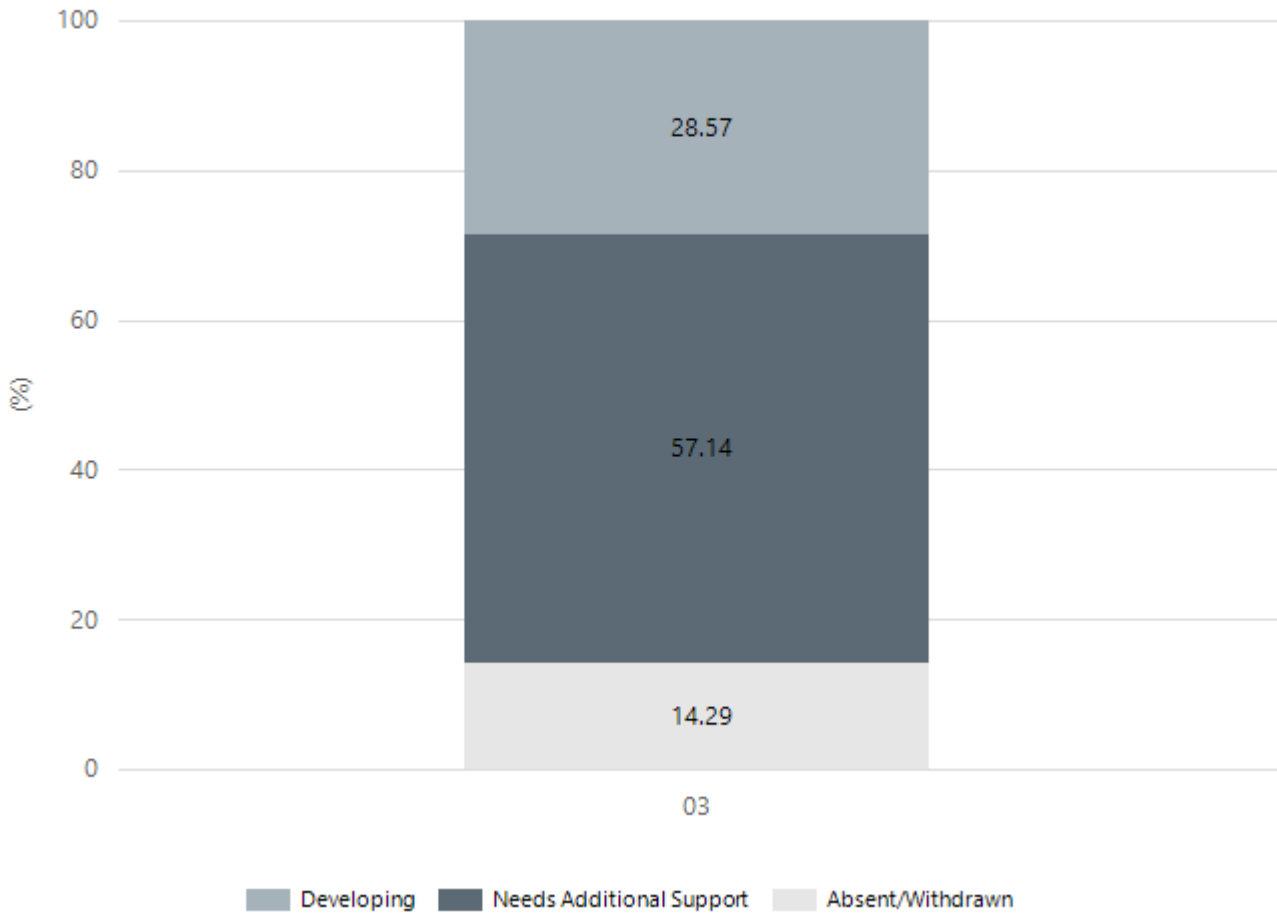
Grammar



Year Level	03
Strong	1
Needs Additional Support	5
Absent/Withdrawn	1
Total	7

Data Source: Department for Education Assessment Data Holdings, 2025. If there are less than 6 students who sat NAPLAN in a school, no information will be shown. If a year level has less than 6 students, that year level will not be shown in NAPLAN results. Only data for Aboriginal learners is displayed.

Spelling



Year Level	03
Developing	2
Needs Additional Support	4
Absent/Withdrawn	1
Total	7

Data Source: Department for Education Assessment Data Holdings, 2025. If there are less than 6 students who sat NAPLAN in a school, no information will be shown. If a year level has less than 6 students, that year level will not be shown in NAPLAN results. Only data for Aboriginal learners is displayed.

School Attendance

Year Level	2023	2024	2025
Reception	88.5%	85.0%	83.1%
Year 01	84.1%	89.6%	87.4%
Year 02	88.4%	89.2%	88.4%
Year 03	88.5%	89.6%	86.0%
Year 04	85.8%	89.3%	90.0%
Year 05	87.6%	87.3%	89.0%
Year 06	83.0%	86.2%	85.0%
Primary Other	73.6%	81.3%	74.6%
Total	86.0%	87.8%	86.3%

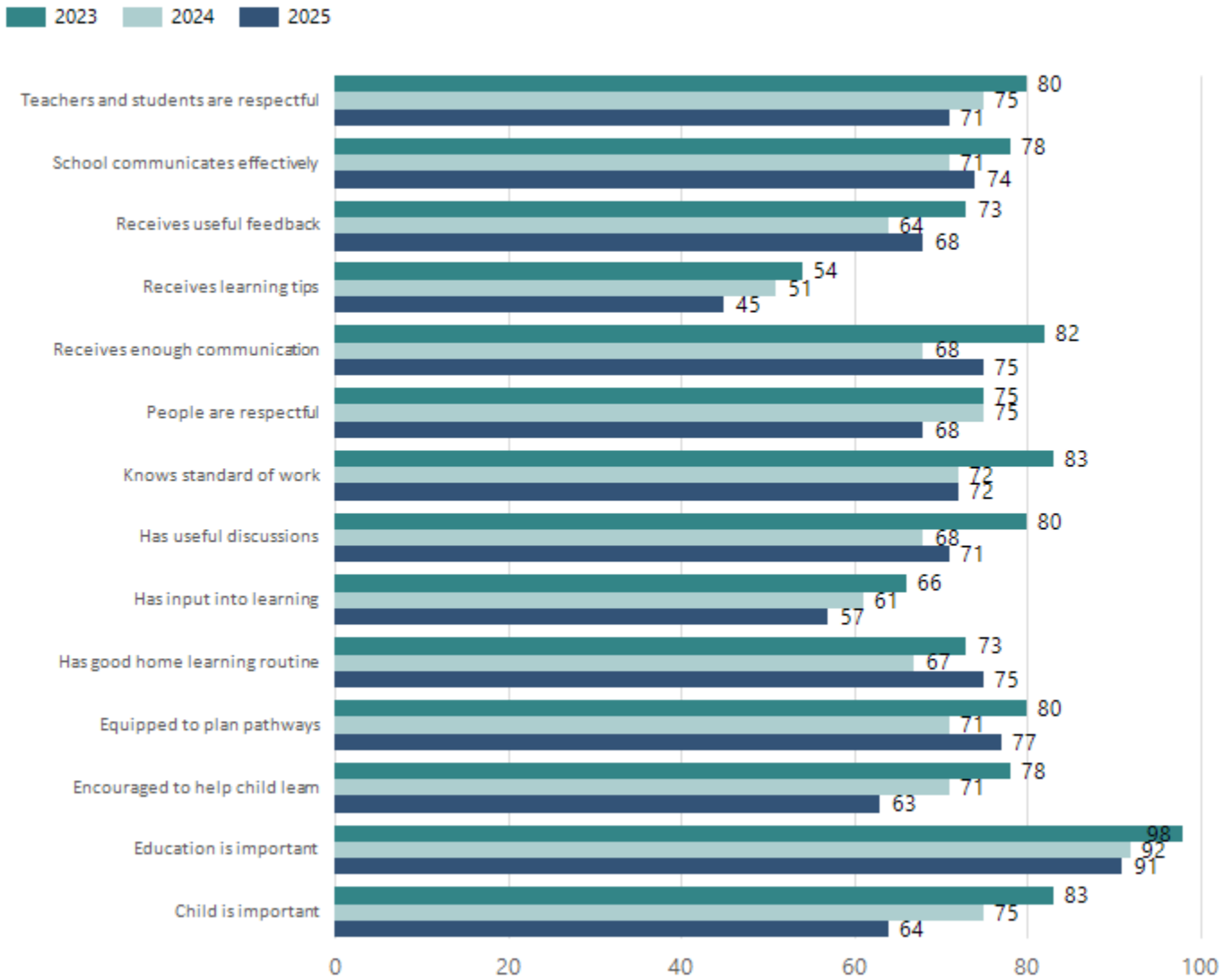
Data Source: Department for Education Attendance Data, Semester 1 Report 2025. A blank cell indicates there we no students enrolled. 'Primary Other' includes students enrolled in specialised education options. 'Secondary Other' includes students who have already spent a year at Year 12 and elected to undertake further study at Year 12.

Attendance Comment

In South Australia, all children and young people must be in school from 6 years to 16 years old. They must attend a government or non-government school full time. From age 16 to 17 however, young people must attend school or an approved learning program (such as an apprenticeship, traineeship, accredited course or university). Schools and parents must encourage and support students to come to school every day. Parents and caregivers must make sure their child is enrolled in a school, and attends school all day and everyday it is open, unless a child is sick or has an approved exemption. Teachers and leaders actively follow up when a student misses school, including recording all absences and non-attendance. All schools in South Australia have local attendance procedures governed under the Education and Children's Services Regulations 2020.

School Parent Opinion Survey Results

Proportion of agree/strongly agree response(%)



Data Source: 2025 Department for Education Parent Opinions Survey, Term 3 2025.

Intended Destination

Leave Reason	Number	%
IS - INTERSTATE	12	86.0%
NG - ATTENDING NON-GOV SCHOOL IN SA	2	14.0%

Data Source: Department for Education Destination Data Report, 2025. Data extract term 3 2025. Data shows recorded destinations for students that left the school in the previous year. Data is uploaded by schools in term 3 and may not reflect final or total figures at time of report creation.

Highest Qualifications held by the teaching workforce and workforce composition

All teachers at this school are qualified and registered with the SA Teachers Registration Board.

Qualification Level	Number of Qualifications
Bachelor's degrees or Diplomas	32
Postgraduate Qualifications	10

Data Source: Data extracted from Mandatory Workforce Information Collections as on the last pay date of June 2025. As self-reported by staff in the system.

Please note: Data includes staff who are Actively employed and on extended paid leave. Please note only the highest qualification of the Teaching staff is reported. Excludes any number of other certifications earned.

Workforce composition including indigenous staff

	Teaching Staff		Non-Teaching Staff	
	Indigenous	Non-Indigenous	Indigenous	Non-Indigenous
Full-Time Equivalents	0.0	33.4	1.2	26.8
Persons	0.0	42.0	2.0	46.0

Data Source: Data extracted from Mandatory Workforce Information Collection as on the last pay date of June 2025.

Please note: Data includes staff who are actively employed and on extended paid leave. "Indigenous category" is self-reported by staff in the system.

Financial Statement

Funding Source	Amount
Grants: State	\$7,607,133.92
Grants: Commonwealth	\$2550
Parent Contributions	\$94,832
Fund Raising	\$3413.30
Other	\$246,318.08

Data Source: School supplied data.